

INDUTHERM

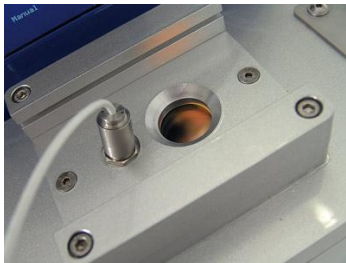
MC-20V Casting Machine with Optical Pyrometer

2,000°C MC 20 V tabletop casting machine:
 cutting-edge technology in the most compact space.

- Very easy and safe to use, short implementation time
- Excellent price-performance ratio
- 3,5 kW induction generator for quickly reaching the melting temperature
- Thorough through-mixing of molten metals using low-frequency induction melting
- Melting under vacuum or inert gas to prevent oxidation
- Top quality form filling using overpressure of up to 3 bars (casting under vacuum also possible)
- Economical consumables

The MC 20 V is designed based on the same tilting principle as the MC 15. However it is systematically designed for intricate casting projects in continuous operation in larger foundries. Latest generation generators

The MC 20 V is equipped with a latest generation induction generator, developed especially for this housing design and with high operating efficiency. Convenient, high precision control is provided via a new operating system, with an LCD display, full text display and program control.



Temperatures up to 2000°C are precisely measured by an optical pyrometer.

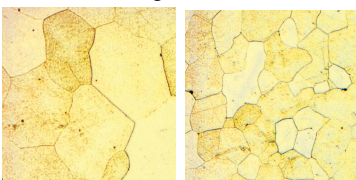
Vibration Technology for ...reduced porosity



porosity without vibration

porosity without vibration

...and finer grain



grain structure without vibration

grain structure with vibration

Award-winning vibration technology – unique in its class. For the first time, our multi-award winning and patent-pending vibration system is now available in a compact casting machine. Using vibration when casting ensures better form filling, creating casts with greater, more consistent densities, higher elasticity and greatly reduced porosity. Vibration technology is a compelling alternative to the frequently used and relatively delicate centrifugal systems, especially when casting platinum or palladium.

Less problems from later processing:
 Elongation limit 12% higher, tensile strength 25% better.



SKU #: 1C-78-2100

MC 20 V

performance

power max. / electrical connection	3.5 kW 230V single phase
temperature max.	2000° C
temperature measurement	<input checked="" type="checkbox"/> thermocouple up to 1,300° C <input checked="" type="checkbox"/> optical pyrometer up to 2,000° C

capacity

casting volume	100 g Au 18 ct 110 g steel/200 g Pt
for use of flasks	up to ø 30/50/65/80 mm x 80 mm h

handling+control

control pannel	by LCD-Display, full text readout
automatic vacuum function	<input checked="" type="checkbox"/>
automatic overpressure function	<input checked="" type="checkbox"/>
vacuum or overpressure after casting	<input checked="" type="checkbox"/> -1 up to +3 bar
function washing by inert gas	<input checked="" type="checkbox"/>
vibration system	<input checked="" type="checkbox"/>
supply: cooling water,	
inert gas argon or nitrogen	<input checked="" type="checkbox"/>
temperature control	up to 2.000° C
RS 232 interface	<input checked="" type="checkbox"/>

accessories

vacuum investment mixer Indumix 2	<input type="checkbox"/>
furnace, 1,100°C	<input type="checkbox"/>
sand blasting cabinet	<input type="checkbox"/>
vacuum pump	<input checked="" type="checkbox"/> (min. 8m ³ /h)
floor unit	-

= standard equipment = optional

