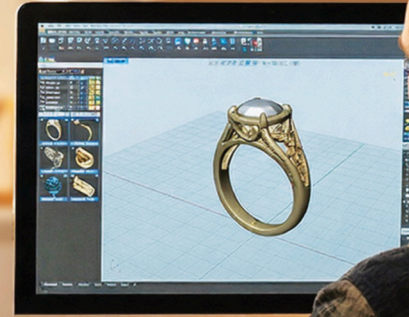


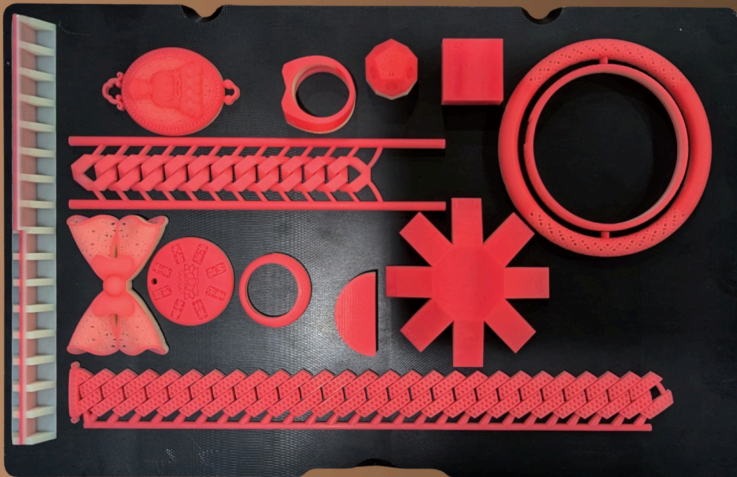
WaxJet 51C



World's First High-Precision Desktop Wax 3D Printer

Flashforge WaxJet 51C is a compact, high-precision, multi-jet wax 3D printer designed for creating detailed casting wax patterns with incredibly smooth surfaces. Its high-speed, high-resolution printhead enhances design flexibility and facilitates efficient manufacturing for the jewelry industry.

2900 x 2900 x 1700 DPI Resolution



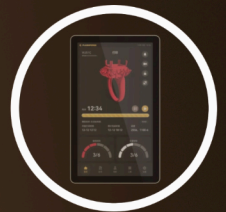
Mass-produce high quality jewelry pieces!



New Compact Size!
34 x 20 x 26 in



Built-in camera for
remote monitoring



13-inch HD
touchscreen



Printing speed
of 7mm/h
(single lane)



Buy Now-Pay Later!
Finance for only
\$789 per month*



57% lower
material cost



Build (20 Pack)
SKU: 68-51C1

Support (8 Pack)
SKU: 68-51C2

Flashforge Wax Material

Flashforge's non-toxic wax materials are perfect for investment casting applications such as jewelry, crafts, and precision parts. They offer **high tensile strength** and durability with added flexibility support for **stone-in-place casting**.



Build Material Cost

Support Material Cost

7 Rings	\$0.97	7 Rings	\$0.51
Per Gram	\$0.46	Per Gram	\$0.18
Material Used	2.1g	Material Used	2.8g

(Material costs based off a single-lane build)

WaxJet 51C Specifications

Print Technology	MultiJet Printing (MJP)
Build Volume	235 x 138 x 100 mm
Resolution	2900 x 2900 x 1700 DPI; Layer Thickness 15 μm
Print Speed	Single Lane: 7 mm/h Dual Lane: 3.5mm/h
Dimensional Accuracy	± 0.0433/20 mm
Material Utilization	Part wax utilization rate ≥ 57%
Slicing Software	WaxJetPrint
Supported Input Formats	STL, SLC
Network Connectivity	Ethernet: 10 / 100 / 100, Wi-Fi: (Via USB Add-On)
Supported Operating System	Windows 10 /11 (64 bit)
Power Supply	AC 100-250V, 50-60 Hz, 2.2 kW
Operating Environment	Temperature: 18°C - 26°C Humidity: 30 - 70%
Equipment Dimensions	865 x 510 x 654 mm
Equipment Weight	115 kg
Packing Dimensions	1020 x 660 x 905 mm
Packing Weight	140 kg



Your Flashforge WaxJet printer purchase is backed by Romanoff's excellent after-sales support. With coast-to-coast support, you can get answers and service the same day!

*Visit romanoff.com for financing details



sales@romanoff.com | 631-842-2400 | romanoff.com