

# SENTINEL SmartTOUCH Xpress & SENTINEL TouchXPRESS

## Genesis Touch Controller Operation Manual



**Genesis (3140)**



**Genesis Mini (1120)**

## Table of Contents

Introduction .....	2
Precautions .....	2
Home Screen Overview .....	3
Quick Start.....	4
First Firing of the Kiln .....	5
Ceramics Programming (Bisc or Glaze) .....	5
Glass Programming .....	7
Custom Programming .....	9
Calculating Ramp Rates for Custom Firing .....	11
Custom Ceramics Program.....	11
Start A Firing .....	11
Operation of the Controller During A Firing .....	12
Adjustments During a Firing.....	14
End of Firing – COMPLETE .....	15
Care of Thermocouple .....	15
Menu Screen .....	15
Data Menu .....	16
Diagnostics .....	16
Adjustments .....	17
Configuration .....	18
Restore Presets .....	20
Customization .....	21
Factory Configuration .....	21
Appendix A: Error Codes .....	22
Full Power Test .....	23
Appendix B: Cone Fire Temperature Profiles .....	24
Appendix C: Custom Firing Default Programs .....	25
Appendix D: Blank Firing Program .....	28
Appendix E: Common Questions and Situations .....	29
Appendix F: Zone Control .....	30
1. Features and Enhancements.....	30
2. General Description .....	30
3. Automatic Lag Function .....	30
4. Thermocouple Offsets.....	30
5. Three Thermocouples .....	31
Appendix G: Genesis Connection Diagram .....	32
Appendix H: Genesis Mini Connection Diagram .....	33

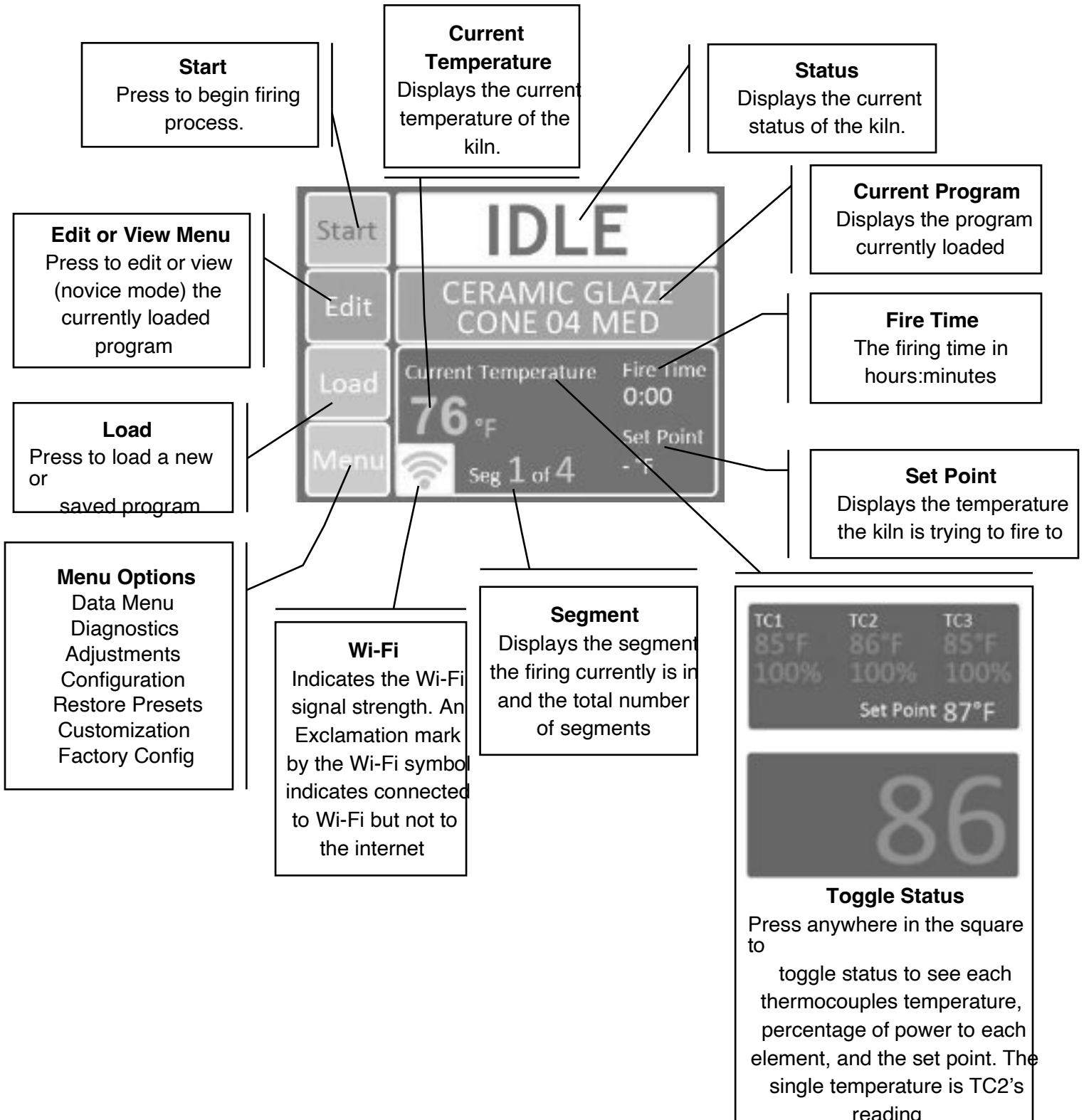
## Introduction

This manual covers the operation of the Genesis (3140) & Genesis Mini (1120) kiln controllers. The Genesis is a versatile touch screen controller that regulates the temperature in your kiln so you can fire a variety of products like ceramics, glass, jewelry, and more. The Genesis has preset ceramic programs with cone fire programming, preset glass firing profiles, and 30 custom programs, along with Wi-Fi capabilities for software updating, built in diagnostics, and maintenance logging among other new features.

## Precautions

- The controller is used to control temperature; it is not a safety device.
- Do not operate the controller in temperatures above 160° F.
- Always supervise your kiln during a firing.
- The controller contains electronic components which are sensitive to static electricity. Before handling the controller dissipate any static charge you may have by touching metal or object. a screw on the controller panel, the electrical box, the kiln lid, or some other grounded
- Always check the position of the thermocouple probe before starting a firing. The current temperature displayed on the controller is measured at the end of the thermocouple which must be in the firing chamber about 1" to 1-1/2". Seal the opening around the thermocouple with kaowool or similar material if necessary.
- Always review the current program before firing to ensure the correct profile is programmed.
- Ensure the kiln and the areas around the kiln are clear of combustible material. See kiln manufacturer's recommendation on required clearances.

## Home Screen Overview



## Quick Start

### ***Step 1: Load A Program (See Pages 7-13)***

- Press the **Load** button.
- Select the type of program.
  - Ceramic (Bisc or Glaze)
  - Glass
  - Custom

### ***Step 2: Review or Edit the Program (See Pages 7-13 )***

- Press the **Edit** or **View** button.
- Review and confirm the program selection.

### ***Step 3: Start the Firing (See Page 13)***

- Press the **Start** button.
- Enter the start code.
- Press **Start**.

## First Firing of the Kiln

The purpose of the first firing is to put a protective oxide layer on the elements and thermocouple.

The first firing is done without ware in the kiln that might give off fumes that contaminate the elements.

It should be done according to the kiln manufacturer's specifications. Consult your kiln manufacturer for questions on the first firing of the kiln.

## Ceramics Programming (Bisc or Glaze)

Programming in Novice mode is the easiest method to program the controller to fire ceramics.

Programming consists of choosing a cone number, firing speed, and a preheat time. The firing speed is

chosen by the type of firing and thickness of the clay used. All 4 speeds below will calculate the firing rate at the end of a firing and adjust the final temperature for correct heat work.

Step	Display	Key Press	What This Selection Means
1	Home Screen	Load	You're ready to program a different program into the controller
2	Ceramics Programming - firing?	Novice Mode Ceramics	Choose from Ceramics, Glass, and Other. Choose Ceramics for a bisc or glaze firing.
3	Cone Number XX Temperature XXXX	Next	Use the scroll bar to choose the desired cone number for the firing. Remember, cone numbers starting with a 0 are a lower temperature than cone numbers not starting with a 0.
4	What speed?		Choose the firing speed either Fast, Medium, MedSlo, or Slow. For example, don't mistake a cone 6 for a cone 06!
		Fast	Fast is the fastest firing speed and is used for glaze firings on thin ware, china paint firings, and decal firings. Firing times range from 4 to 5 hours.
		Or Medium	Medium is used for firing glaze on thicker ware or for bisque firing very thin ware. Typical firing time is 6-8 hours
		Or MedSlo	MedSlo is used to bisque medium pieces or thinner ware that requires less time for water smoking and carbon burn-out. Typical firing time is 9-11 hours, depending on cone number
		Or Slow	Slow is used to bisque thicker, hand thrown ware. The slow speed gives extra time for release of water and carbon burn-out. Typical firing times range from 13-17 hours depending on the cone number. Hand built pieces may need a preheat stage.
5	Preheat Time?	None	Choose the preheat time either None, 4 Hr, 8 Hr, or 12 Hr. No preheat time is needed when the pieces are a thin, bone dry bisc or glaze.
		Or 4 Hr	Use a 4 hour preheat time for thicker, slightly wet pieces.

		Or 8 Hr	Use an 8 hour preheat time for thick, wet pieces.
		Or 12 Hr	Use a 12 hour preheat time for hand built, kids pieces.
6	Program Loaded:	OK	Return to Home Screen at IDLE.

**Ceramics Programming - Novice Mode Off:**

Step	Display Shows	Key Press	What This Selection Means
1	Home Screen	Load	You're ready to load a different program into the controller
2	Load Program		Choose between 1-Bisc, 2-Glaze, 3-Glass, or 4-Custom
		1-Bisc	The default bisc program will be loaded to the controller. Any saved changes made to the bisc program will overwrite the default glaze program will be loaded to the controller.
		Or 2-Glaze	The default glaze program will be loaded to the controller. Any saved changes made to the glaze program will overwrite the default program.
3	Program Loaded:	OK	Returns to Home Screen. To make changes to the loaded program, go into the edit menu.
4	Home Screen	Edit	Displays the current settings for the program. To change the

settings, press the setting to be changed and select the new

The diagram shows a 'Ceramic Settings' screen with the following fields and callouts:

- Preheat time:** 0:00. Callout: Press Preheat time to change value. Min: 0:00 Max: 24:00
- Cone #:** 04. Callout: Press Cone # to change the value. Min: Cone 022 Max: Cone 12
- Speed:** Fast. Callout: Press Speed to change the value. Options: Fast, Medium, MedSlo, and Slow
- Hold at peak:** 0:00. Callout: Press Hold at Peak to change value. Min: 0:00 Max: 24:00
- Buttons:** Back, Copy, Graph.
  - Callout for Back: Press BACK to return to the Home Screen
  - Callout for Copy: Press Copy to copy the loaded program to one of the custom user programs. The list of user programs will appear when Copy is pressed.
  - Callout for Graph: Press to graph and see a table of the loaded program. Includes time, temperature, and segments.

**Figure 2:** Ceramics programming sample.

			setting. For example: To change the preheat time, press
5	Ceramics Settings Preheat Time Cone # Speed Hold at Peak Cooling	Back	Preheat Time, type in the new preheat time, and press str.  Returns to Home Screen at IDLE.

**Note:** When a preheat is selected, the temperature ramps up at 60°F/hour (33°C/hr) to 200°F (93°C) for

the amount of time programmed.

When the copy function is used and Copy is selected, the controller will return to the IDLE screen. The

loaded program will become the copied program in its new user location.

**Notes for Cooling (Not Pictured):** Scroll down to select Cooling. Cooling is set to Off unless changed by

the user. With cooling turned on, it adds 2 segments on to the end of the firing. The first segment cools

the kiln from the top temperature down to 1900°F at a rate of 9999 (As fast as possible). The 2<sup>nd</sup> and

final segment cools the kiln from 1900°F down to 1500°F at a rate of 150°F per hour.

## Glass Programming

Programming in Novice mode is the easiest method to program the controller for glass firings.

Step	What type of firing?	Key Press	What This Selection Means
1	Home Screen	Load	You're ready to load a different program into the controller.
2	What are you firing?	Glass	Choose from Ceramics, Glass, and Other. Choose Glass for
3	What type of firing?	Slump	Choose the type of firing, either Slump, Tac Fuse, Full Fuse, or
		Slump	Slump is used for firing glass pieces that you want to conform
		Tac Fuse	Tac Fuse is used for fusing glass that result in softened edges
		Full Fuse	Full Fuse is used for fusing glass that result in soft, round edges
4	What speed?	Fast	Choose the firing speed, either Fast, Medium, MedSlo, or Slow.
		Fast	Fast is the fastest firing speed and is used for glass pieces that
		Medium	Medium is used for glass pieces that are under 4in. x 4in. or
		MedSlo	MedSlo is used for glass pieces that are under 8in. x 8 in. or

3 layers thick.

		Slow	Slow is the slowest firing speed and is used for glass pieces that
5	Program Loaded:	OK	are over 8in. x 8in. or multiple sheets thick. Return to Home Screen at IDLE.

**Glass Programming – Novice Mode**

Step	Display Shows	Key Press	What This Selection Means
1	Home Screen	Load	You're ready to load a different program into the controller
2	Load Program	3-Glass	Choose between 1-Bisc, 2-Glaze, 3-Glass, or 4-Custom memory.
3	Glass		Choose the type of glass firing, either Slump, Tac Fuse, Full Fuse, or Cast
		Slump	Slump is used for firing glass pieces that you want to conform to a mold
		Tac Fuse	Tac Fuse is used for fusing glass that result in softened edges
		Full Fuse	Full Fuse is used for fusing glass that result in soft, round edges
		Cast	Cast is used for melting glass pieces together
4	Program Loaded:	OK	Returns to Home Screen. To make changes to the loaded program, go into the edit menu.
5	Home Screen	Edit	Displays the current settings for the program. To change the settings, press the setting to be changed and select the new setting. For example: To change the speed, press Speed, select the desired speed, and press Save.
6	Glass Settings Temperature Hold Time Speed Glass COE	Graph	Press to graph the currently loaded program.
7	Graph	Table	Press TABLE to view and edit each individual segment of the firing. Use the scroll bar at the right side of the screen to view each segment in the loaded program. Displays the current settings for each segment of the firing (rate, temperature, and hold time for each segment). To change the settings, press the setting to be changed and select the new setting. For example:
8		Back	Returns to Home Screen at IDLE.

under Segment 1's rate, type in the new temperature, and press Save. Any saved changes made to the Custom user program will overwrite the default program.

## Custom Programming

The default custom programs are listed in Appendix C: Custom Firing Default Programs. The

Genesis has 30 Custom user programs to store and reuse. User programs 1-12 have 32 segments each,

while 13-30 have 8 segments each. Each segment has a firing rate, a soak temperature and a hold time.

Custom programs can only be edited with Novice Mode set to OFF. See page 19 for more

Step	Display	Key Press	What This Selection Means
1	Shows Custom Programming – Novice Mode ON	Load	You're ready to load a different program into the controller
2	What are you Firing?	3 - Other	Choose from Ceramics, Glass, and Other. Choose Other for memory
3	Other User1- User2- User3-	UserX -	Using the scroll bar on the right side of the screen, scroll until the desired program is displayed. For a complete list of the default programs, see Appendix C: Custom Firing Default Programs.
4	Program Loaded: CUSTOM UserX	OK	The selected custom program has been loaded.
5	Home Screen	View	Use the scroll bar at the right side of the screen to view each segment in the loaded program. There is specific rate, temperature, and hold time for each segment. You cannot add,
6	UserX – #, Rate, Temp, Hold, F	Back	delete, or change segments when Novice Mode is activated. Returns to Home Screen at IDLE.

### Custom Programming – Novice Mode OFF:

Step	Display Shows	Key Press	What This Selection Means
1	Home Screen	Load	You're ready to load a different program into the controller
2	Load Program	4-Custom	Choose between 1-Bisc, 2-Glaze, 3-Glass, or 4-Custom
3	Custom	UserX -	Using the scroll bar on the right side of the screen, scroll until the desired program is displayed. For a complete list of the default programs, see Appendix C: Custom Firing Default Programs.
4	Program Loaded: CUSTOM UserX	OK	The selected custom program has been loaded.

5	Home Screen	Edit	To make changes to the loaded program, go into the edit menu. Use the scroll bar at the right side of the screen to view each segment in the loaded program. Displays the current settings for each segment of the firing (rate, temperature, and hold time for each segment). To change the settings, press the setting to be changed and select the new setting. For example:
6	UserX- #, Rate, Temp, Hold, F	Back	To change the rate for Segment 1, press the temperature listed under Segment 1's rate, type in the new temperature, and press Save. Any saved changes made to the Custom user program will overwrite the default program.

The screenshot shows a screen titled "User5-CN10 Crystal Glz" with a table of firing segments and three control buttons at the bottom: "Back", "Copy", and "Graph".

#	Rate	Temp	Hold	F
1	300	1000	0:00	🔌
2	500	2320	0:10	
3	9999	2000	3:00	
4	500	1800	1:00	

Callouts and their descriptions:

- Top Left:** Press the Segment number for options:  
1-Insert Segment (Adds one above selected segment)  
2-Add Segment (Adds one to the end)  
3-Delete Segment  
4-Delete To End
- Top Center:** Press to change the firing name. A 2<sup>nd</sup> screen will appear, make the changes, and press "Save"
- Top Right:** Press to activate the fan for that segment. See Output 4 Options on page 20 for more details.
- Right Side (Pointing to Fan icon):** Press the Hold time to change it for that segment. Min: 0:00 Max: 99:00
- Bottom Left (Pointing to Back button):** Press Back to return to the Home Screen
- Bottom Left (Pointing to Copy button):** Press "Copy" to copy the loaded program to a different custom user program.
- Bottom Center (Pointing to Graph button):** Press to graph the loaded program. Includes time, temperature, and segments.
- Bottom Right (Pointing to Temp field):** Press the Temperature to change the temperature for that segment. Min: 0 Max: 2400

**Figure 3:** Sample of a Custom Program.

**Notes For Custom Programming:**

1. A firing will start in the earliest segment that has a soak temperature greater than the current kiln temperature. If the current kiln temperature is above all soak temperatures, the controller will go directly to complete.

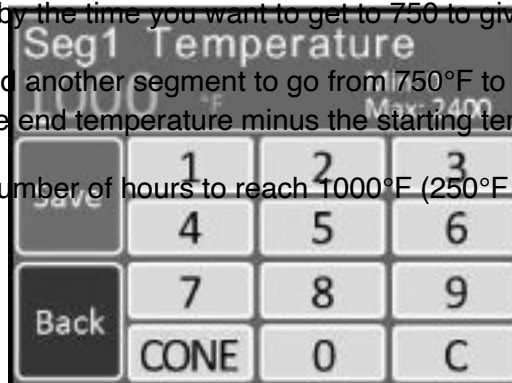
2. To ramp up or down at the maximum rate, enter a rate of 9999.
3. To program a down ramp, enter the rate/hour then a temperature below the previous segment's temperature.
4. It is best to write out the firing profile that you plan to program before you begin programming.

A blank form for writing your firing programs can be found in **Appendix D: Blank Firing Program**.

Photo-copy as needed.

### Calculating Ramp Rates for Custom Firing

If you want to go from room temperature to 750°F in 3 hours, use this method to calculate the ramp rate. Take the temperature that you want to go to (750°F) minus the starting temperature (70°F – approximate room temperature) to get the number of degrees you want to increase in 3 hours (750 – 70 = 680). Divide this number by the time you want to get to 750 to give you the ramp rate (680°F ÷ 3 hrs = 227°F/hr). If you want to add another segment to go from 750°F to 1000°F in 4 hours, the same procedure is used. Take the end temperature minus the starting temperature (1000 – 750 = 250) and divide this number by the number of hours to reach 1000°F (250°F ÷ 4 hrs = 63°F/hr).



**Figure 4:** During a Custom Firing, you can enter the desired temperature or press CONE. Choose the desired

Cone Number and the controller will enter the corresponding temperature.

### Custom Ceramics Program

Writing your own ceramics program combines the versatility of the Custom program and the heat-work calculation of a ceramics firing. It is a great way to get custom heating and cooling rates and still have the controller do the heat-work calculation to get the correct cone bend regardless of firing rate. The steps to write your own cone fire are the same as entering a Custom program except when programming the top temperatures, press the “**CONE**” button, scroll until the desired cone number is displayed, and press “**SAVE**”. The selected cone’s top temperature will be displayed under Temp for that segment. Press “**Start**” to open the Start Firing Screen. There are 2 options as to how you’d like to begin the firing. To start the kiln immediately, press “**1-Start Now**”, enter the start code (Default = 1), and press “**Start**”. To program the kiln to start in a set amount of time press “**2-Start Later**”, enter the start code, press “**Start**”, enter a delay start time of up to 4 hours, and press “**SAVE**”. **CAUTION:**

**Make sure the kiln area will stay clear and safe throughout the delay time and firing time.** To arm the controller

for a remote start via the KISS program, press “**3-Remote Start**”, enter the start code, and press “**Start**”.

The controller will now read “**REMOTE**” at the top. This means the area around the kiln is clear, it’s

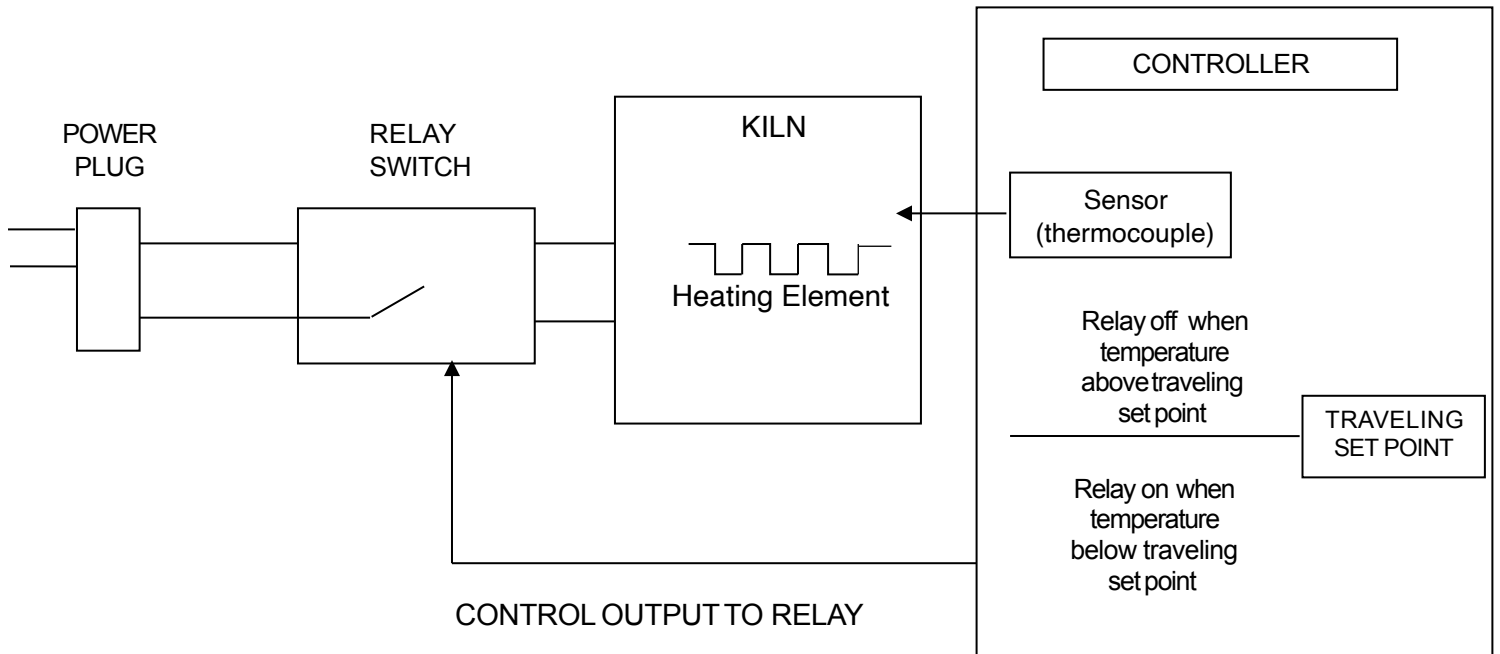
loaded, and it can be fired at any time from the KISS program.

### **Operation of the Controller During A Firing**

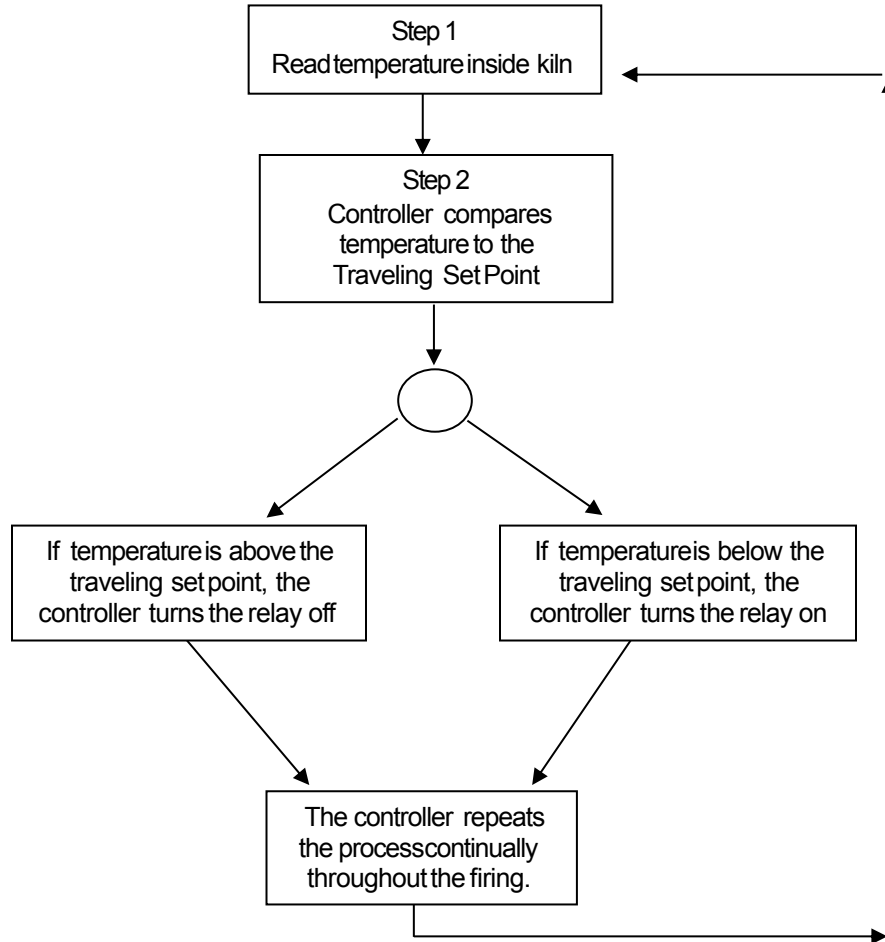
The Genesis controller eliminates much of the “babysitting” that is required with a manual kiln.

To ensure the most consistent results from one firing to the next, you should understand how the controller operates and monitor the firing to ensure proper operation. The following diagram and flow

chart show the basic components of a kiln’s control system.



*Figure 5: Kiln Operation*



**Figure 6:** Shows a flow chart of the control algorithm in its simplest form. Like your home thermostat.

The diagram and flow chart show that the kiln control system, in its simplest form, works like your thermostat at home – when the temperature is too cool the heater comes on; when the temperature is too hot the heater turns off. The major components of the control system are the Genesis controller, thermocouple temperature sensor, relay switch, power source, and heating elements. The controller is the brain of the operation; the controller adjusts the traveling set point according to your program, reads the temperature in the kiln, cycles the relay on or off and determines when to end the program.

The thermocouple (T/C) sensor is the first part to inspect when loading the kiln. The tip of the T/C should protrude approximately 1- 1/2" into the firing chamber. Next, "START" is pressed, the controller reads the kiln temperature and uses that temperature as a starting point for a traveling set-point (also called the local set point). The displayed temperature is the temperature inside the kiln. You should then hear the relay(s) start cycling on and off to keep the temperature near the traveling set point. As the firing progresses the controller moves the traveling set-point according to the programmed firing rate. The displayed temperature should increase with the traveling set-point and the relay will be "on" longer. This sequence continues until the final temperature is reached and the controller turns

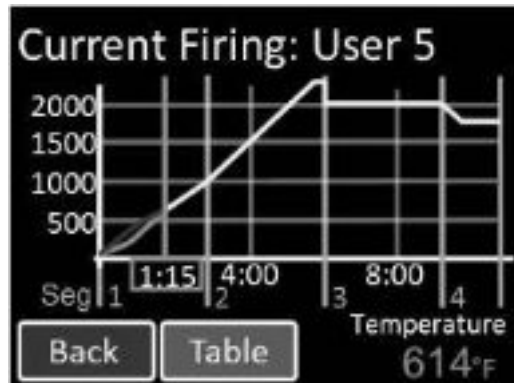


Figure 7: Sample graph of program during a firing.

### Adjustments During a Firing

Once a firing has been started, the screen will change to the Firing Screen, as seen on page 6.

You can still view the program and make adjustments to the firing.

#### Stop

Press STOP at any point in the firing to immediately stop the firing. The controller will

return to the Home Screen. To start the program again, simply restart the kiln. The controller

will start in the segment with an up-ramp equal to the kiln's current temperature. If the kiln does

not restart in the segment it was stopped in, press the Adjust button and skip to the desired

segment.

#### View (Applies to Novice Mode)

View the setting for the firing. For a ceramic firing, the preheat time, cone #, speed, and

hold time will be displayed. Press the "Graph" button to view the firing as a graph. This includes

Meaning	
Orange Vertical Line W/ Oranges	Segment of the firing
Green Vertical Line W/ Time	Current firing time. Represents where the firing is
Gray Vertical Line W/ Time	Currently compared to the graph time at various points throughout the firing
Red Line	Projected path of the firing
Green Graphing Line	Firing's actual path
Blue Graphing Line	Firing's supposed path (Shown only when actual path and supposed path are not the same)
Horizontal Gray Line W/ Temperature	Kiln Temperature

### **Edit (Applies to when Novice Mode is Off)**

“Edit-on-the-fly”. Pressing the Edit key while firing a custom program will present the table view. Gray segments have already been fired and cannot be changed. All edit features listed on page 12 are available to segments that have not been completed.

### **Adjust**

Press Adjust to make adjustments to the firing while a firing is in progress. Pressing “**Add Time**” during a hold segment of the firing will add 5 minutes to the hold. It has no effect if the firing is not in a hold when pressed. Pressing “**Add Temperature**” during a hold segment will increase the hold temperature by 5°F. It has no effect if the firing is not in a hold when pressed. Pressing “**Skip Step**” will skip the current segment and move to the next in the firing. This feature is used when enough heat work has been done at the current segment and you want to immediately go to the next ramp rate. Pressing “**Alarm Temp.**” allows you to adjust the alarm temperature for the firing. A temperature of 9999 shuts the alarm off.

### **Menu**

The firing menu allows for viewing of statistics and mid-firing diagnostics. By pressing “**Diagnostics**”, the controller runs a manual diagnostics test during the firing. Pressing “**TC Offsets**” allows the user to change the temperature offsets for each thermocouple. Minimum: -99°F Maximum: 99°F. For more information see **TC Offsets** under the **Adjustment Menu** on page 19.

## **End of Firing – COMPLETE**

When the firing is complete, an alarm will sound and the controller will display COMPLETE with the current temperature and firing time. To return to IDLE, press “**Clear**”. You may open the kiln when the temperature has cooled to 150°F.

## **Care of Thermocouple**

The small metal rod protruding into the firing chamber is the temperature sensor, or thermocouple. Do not let shelves, posts, or ware touch the thermocouple, this could affect the temperature reading.

The Menu Screen is a list of various options from checking your last firing status, diagnostics, offsets, and more. Bumping the thermocouple during loading can damage it or push it out of the firing chamber. To navigate through the Menu options, press and hold the green slider on the right side of the screen and slide up or down for more options. For more information on each component of the Menu, see the descriptions below:

## **Menu Screen**

## **Data Menu**

The Data Menu holds 3 types of lists of information: diagnostic information, status information, and kiln information.

### **Last Firing Status**

Contains diagnostics information specific to the last firing of the kiln.

### **Last Error Status**

Contains diagnostic information specific to the last error that was encountered by the controller when firing.

### **Factory Diagnostics**

Contains diagnostic information from factory. This includes amperage readings for each section, line voltage readings, and board output. This information can be used for comparison when a manual diagnostic test is run.

### **Last Element Change**

Contains diagnostic information from the last new elements diagnostics. This includes amperage readings for each section, line voltage readings, and board output.

### **Last Manual Diagnostics**

Contains diagnostic information from the last manual diagnostics test. This includes amperage readings for each section, line voltage readings, and board output.

### **Graph Past Firing**

Contains the graphs from the last 10 firings. Use the scroll bar to find the desired firing to graph and select it. If WiFi is connected during the firing, the month and day will be displayed next to the firing. If WiFi is not connected, it will read 0/0 after the name of the firing.

### **Kiln Info**

Contains the firmware version plus the serial number and mac address for registering and viewing your kiln at [www.bartinst.com](http://www.bartinst.com). Updating firmware will **NOT** affect the firing programs.

## **Diagnostics**

### **Board Temperature**

Displays the current board temperature. Displaying the board temperature is a diagnostics function to check the operation of the board. The safe range for board temperature is between 0°F - 160°F. Any temperatures below or above that range may cause damage to the controller.

**New Element Diagnostics**

Run New Element Diagnostics when the elements have been changed to record amperages and voltages for the new element. The results are stored under Data Menu – Last Element Change.

**Relay Health**

Keep track of the number of on/off cycles of the relays on your kiln. An on/off cycle will be counted as one. When a relay is replaced, press the corresponding zone and press the RESET button to set the number of cycles back to 0.

**Adjustments**

Adjustments allows you to change the Cone and Thermocouple offsets as well as the Alarm temperature and Output 4 Percentage On for the controller.

**Cone Offset**

Cone offset is used to raise or lower the final cone temperature. The final cone temperature can be raised or lowered a maximum of 99°F (37°C). To correct an under-firing set a positive cone offset. To correct an over-firing, set a negative (-) cone offset. To change the

Degrees	Meaning	Cone Offset Example	Effect
20°	Raise the final cone temperature by 20°F	20°	Increases heat work
45°	Raise the final cone temperature by 45°F	45°	Increases heat work
-15°	Lower the final cone temperature by 15°F	-15°	Decreases heat work
-35°	Lower the final cone temperature by 35°F	-35°	Decreases heat work

**Thermocouple Offset**

Thermocouple offset is used to raise or lower the temperature indicated by the thermocouples. This is generally used to balance the heat-work in a zone controller kiln. The maximum TC Offset is 99°F (37°C). To correct an under-firing set a negative TC Offset. To correct an over-firing, set a positive TC Offset. To change the TC Offset for thermocouple 1, press “TC Offsets”, press “TC1 Offset”, enter the desired number and press “Save”. Repeat for TC2 Offset and TC3 Offset if needed.

**Alarm Temperature**

Set the alarm temperature for the kiln. To set the alarm before the firing, press “Set Alarm”, type the desired alarm temperature, and press “SAVE”. The default alarm temperature is 9999°F (Off). The alarm setting will change as you change the loaded program. For example,

### **Out 4 Percent On**

Sets the “on time” Output 4 as a percent of output three’s “on time”. Only used when enabled by the kiln manufacturer.

### **End of Hold Alarm**

When enabled, the alarm will sound when a hold has come to an end. To stop the alarm, simply tap anywhere on the screen. To enable the End of Hold Alarm, press “**Enable**” and press “**SAVE**”.

### **Start of Hold Alarm**

When enabled, the alarm will sound when a hold has started. To stop the alarm, simply tap anywhere on the screen. To enable the End of Hold Alarm, press “**Enable**” and press “**SAVE**”.

### **PID Gain**

Check with your kiln manufacturer before making changes to this setting.

## **Configuration**

### **Novice Mode**

The Genesis may come set in Novice Mode depending on the kiln manufacturer’s preference. Novice Mode is meant for beginner users to make programming easier. For more advanced programming, Novice Mode can be turned off. To turn Novice Mode off, select “**Off**” and press “**Save**”.

### **Communications**

Set up Wi-Fi for Firmware download and KISS ID for monitoring firings from your PC.

(Additional computer software required for PC monitoring)

**Kiss ID** – Each controller to be monitored must have a unique KISS ID number ranging from 1 to 50. See KISS manual for details.

**Enable Wi-Fi** – Enable or disable the Wi-Fi feature. **Off** turns Wi-Fi capabilities off at all times. **On When Firing** enables Wi-Fi only when a firing is in progress. **Always On** turns the Wi-Fi on anytime it is within range of a setup Wi-Fi connection.

**Wi-Fi Setup** – To set up Wi-Fi for the Genesis, press “**Wi-Fi Setup**” and the controller will scan for nearby networks. Select your desired network and enter the password (if required) and press “**Save**”.

**Reset WiFi** – Press Reset WiFi when having trouble with the WiFi connection. The controller will reset the WiFi connection and attempt to reconnect to your currently saved connection.

**Export Log File** – Used to activate Server Mode. This allows the controller to “serve” a file to a computer/phone that is on the same access point as the controller. When “**Export Log File**” is pressed, the controller will list an IP address and a code. Type the address listed on the controller into your internet browser and then enter the code when prompted.

The last 10 firings will be listed and each firing has 2 files – the temperature data and the event file. The temperature file collects data every 30 seconds. The event file collects data any time an “event” occurs such as a hold or an error occurs. Click on the file to be observed to download it.

**Manual WiFi Setup** – Used to manually set up a WiFi network that is hidden or otherwise not found when running WiFi Setup. Enter the network name under SSID and press “**Save**”. Under password, enter the network password at press “**Save**”.

### **Temperature F/C**

Choose which temperature scale to use with your kiln, Fahrenheit or Celsius. To change the temperature scale, press “**Temperature F/C**”, press the desired temperature scale, either “**Fahrenheit**” or “**Celsius**”, and press “**Save**”.

### **Error Codes**

Turn the error codes on or off for the kiln. The default setting for the controller is On. We recommend you keep the error codes on to protect your firings. They can be turned Off, in special cases, such as jewelry or glass firings where the kiln is left open. They may also be turned off when troubleshooting kiln problems.

### **Number of Zones**

Change the number of zones (Thermocouples) the Genesis will control. For Genesis (3140) model choose: 1, 2, or 3. The Genesis Mini (1120) can only be set for 1 zone.

### **Output 4 Options – (Usually set as a factory option)**

Output 4 has 3 modes for running vent fans (Options A, B, & C), one mode that uses Output 4 to indicate the alarm has triggered (Alarm), and one mode for running elements in the lid or floor of the kiln (Percent).

Option C – Used to control a vent, an alarm, or other atmospheric control. Output 4 can be programmed to be on or off during each segment of a Custom program. Output 4 is off during Ceramic and Glass programs.

Alarm – When this option is selected, Output 4 comes on when the alarm is triggered or an error code is encountered.

Percent – Output 4 can be programmed to be on for a percent of the time Output 3 is on. This option is used when Output 4 controls floor or lid elements. To ensure Output 4 stays off at all times, use this option and set the percentage to zero.

### **Start Code**

The Start Code is entered to start a firing. Enter any 4 number combination and press “**Save**”. Default = 1. This will be entered anytime the kiln is fired.

### **Calibrate Touch**

Used to re-calibrate the touch screen if buttons aren’t working properly. Press the “**Calibrate Touch**” button and follow the onscreen instruction to re-calibrate.

### **Cost Setup**

Enter the cost per kilowatt hour and the wattage for each zone in the kiln. The cost per kilowatt hour has a minimum of \$0.001 (1/10<sup>th</sup> of a penny) and a maximum of \$9.999. This information can be acquired from your electric company. The zone wattage has a minimum of 0 and a maximum of 50,000 Watts. This information can be acquired from the kiln manufacturer or consult your kiln’s manual. If it a multi-zone kiln, you can enter the kiln’s wattage in Zone 2, or divide the kiln’s wattage and split evenly between the 3 zones.

**Example:** The cost per kilowatt hour is 16 cents and the kiln is a single zone with a wattage of 16,000. Press **Cost/KWH**, type in 0.16 and press **SAVE**. Press **Zone1 Watts**, type in 0, and press **SAVE**. Press **Zone2 Watts**, type in 16,000, and press **SAVE**. Press **Zone 3 Watts**, type in 0, and press **SAVE**.

### **Indefinite Hold**

Turn to ON to activate the Indefinite Hold feature. Once turned on, a user can program an indefinite hold by entering 9999 into a hold time of a segment of a user program. Once set, the controller will hold at that temperature indefinitely until the user stops the program.

## **Restore Presets**

Restore all preset programs and offsets to factory settings.  
5/8/26 Romanoff.com • Sales@romanoff.com • 631-842-2400

## **Restore User Programs**

### **Reset TC Offsets**

Reset thermocouple offsets to factory settings. Default TC Offset = 0 for all thermocouples. To reset: Press **“2-Reset TC Offsets”** and press **“RESTORE”**.

### **Restore Cone Offsets**

Reset cone offsets to factory settings. Default Cone Offset = 0 for all cones. To reset:

Press **“3-Reset Cone Offs”** and press **“RESTORE”**.

### **Restore Glass**

Restore the Glass firing setting back to factory. Once **“RESTORE”** is pressed, any changes

made to the Glass profiles will be restored back to factory and cannot be undone.

## ***Customization***

Customization allows you to change what program menus are available and which set of custom

User profiles to be loaded into the controller either a Mix, Heat Treat, or PMC.

### **Ceramic Menus**

Allows the user to enable or disable the ceramic programming menus. When disabled,

the Bisc and Glaze programs will be removed under **“Load Program”**.

### **Glass Menus**

Allows the user to enable or disable the glass programming menus. When disabled, the

glass programs will be removed under **“Load Program”**.

### **User Library**

Allows the user to change which customizable user programs are to be loaded into the

controller. Options for programs include **“Mix”**, **“Heat Treat”**, and **“PMC”**. For a list of the User

Libraries, see **Appendix C**.

## ***Factory Configuration***

Factory configuration is used by the kiln manufacturer to set kiln specific parameters for the controller

such as thermocouple type, top temperature, and board temperature. For more information, see the

technical manual online. Contact the kiln manufacturer before making any changes that might damage

the kiln.

## Appendix A: Error Codes

If you get an error code, it is important to note the error letter or number. It will help you in diagnosing any problem with the kiln. When an error code is displayed, it will give a short description of the error. Press “**Clear**” to clear an error code.

The list of error codes follows:

**NOTE: THESE ERRORS WILL ONLY BE DETECTED IF THE ERROR CODES ARE TURNED**

Error Code	Description	Possible Causes
<b>ERROR 1</b>	Kiln temperature increasing slower than 12°F per hour when ramping up	This is a kiln heating problem, not a controller problem. Do the Full Power Test to check elements and relays. Low or dropping voltage to the kiln could also be the cause.
<b>ERROR 2</b>	Kiln temperature 50°F above hold temperature	A thermocouple reading incorrectly or improperly placed. A relay latched in the “on” position may cause this error. Another possible cause is if the kiln lid is opened for rapid cooling, then closed, such as for glass firings.
<b>ERROR 3</b>	Kiln temperature 50°F below hold temperature	Relay failure.
<b>ERROR 4</b>	Kiln temperature 50°F above previous hold when ramping down	Same causes as for <b>E-2</b> .
<b>ERROR 5</b>	Kiln temperature 50°F below traveling set point when ramping down.	Relay failure.
<b>ERROR D</b>	Kiln temperature 50°F above traveling set point	Stuck relay or stuck output. If using zone control, then the

outputs or t/c’s may be in the wrong zones.

**NOTE: THE ERROR CODE SETTING DOES NOT AFFECT THESE ERRORS:**

Error Code	Description	Possible Causes and/or Corrections
<b>ERROR 0</b>	Software error	Check the selected program and reprogram, if necessary. If error persists or program does not hold in memory, controller may need to be returned to factory for service.
<b>ERROR 6</b>	Problem with thermocouple leads	This generally indicates the thermocouple is connected incorrectly, possibly reversed. Ensure the thermocouple extension wires are connected correctly to the controller.
<b>ERROR 8</b>	In cone fire mode, temperature decreasing in last segment	If the kiln has a kiln-sitter, it may have turned the kiln off and at all connection blocks back to the thermocouple. Other possible causes are
<b>ERROR 9</b>	Software thermocouple selection does not match the hardware thermocouple jumper selection	The jumper on the circuit board may fail. The setting for thermocouple TYPE in the software do not match.
<b>E--</b>	Power loss during EEprom write	Turn the controller off and back on. Recheck the selected program and reprogram, if necessary.

<b>ERROR A</b>	Invalid program variable	Reprogram all segments of the program being fired. If error persists, controller may need to be returned to factory for service.
<b>ERROR bd</b>	Board temperature too high	The control box temperature may be too hot or the limit temperature may need to be reset. If the room temperature is very hot, aiming a fan at the control box may decrease the temperature.
<b>ERROR E</b>	Hardware error	Controller will need to be returned to the factory for service.
<b>ERROR R</b>	Microprocessor memory does not match program storage memory (EEprom)	Reprogram and try to fire again. If error persists, controller may need to be returned to factory for service.
<b>ERRP</b>	ERRP will display. To clear the display, press "Clear". The firing in progress will continue.	Power outage; kiln is still firing.
<b>Thermocouple FAIL</b>	Thermocouple FAIL indicates one or more t/c's have failed. If more than one thermocouple is connected, the controller will indicate which thermocouple has failed.	Check the board temperature under Diagnostics under Menu. If the board temperature is approximately room temperature, then the t/c is defective. If the board temperature shows a high temperature the circuit board is defective.
<b>PF</b>	Power failure. Firing has stopped.	Power was lost during a firing and the kiln temperature is defective. Power was below 140°F or the kiln temperature dropped more than 250 degrees during the power outage.

**Full Power Test**

The full power test is used to check the relays and elements of the kiln. To set the controller for a full power test, simply load the User12 program and turn the alarm to 9999. With the kiln empty and the lid open, start the firing. Visually inspect the elements after the kiln has fired for 20 – 25 minutes. Observe each element from where it comes into the kiln all the way around to see that it is equally bright throughout. The following observations are possible:

- One section of the kiln is dark and not coming on.** – This could indicate a defective relay since there is usually one relay per section.
- One element is not glowing at all.** – This indicates a broken or bad element.
- There are darker (Cool) spots along the elements.** – This indicates worn elements.
- The top and bottom elements appear brighter.** – This is normal for many kilns that have hotter elements in the top and bottom.

After you've made your observations, turn off the kiln. Contact your kiln manufacturer for kiln replacement parts (relays and elements). If there is an issue with your controller, please contact us.

## Appendix B: Cone Fire Temperature Profiles

Firing Profiles for Cone 04, Temperature 1945°F (1063°C)

<b>Ceramics – Slow (Bisc Hand Thrown)</b>			
Segment	Rate/hr	Temperature	Stage Time
1	80	250	2.25
2	200	1000	3.75
3	100	1100	1.00
4	180	1695	3.31
5	80	1945	3.13
<b>Total Firing Time:</b>		<b>13 hrs. 26 min.</b>	

<b>Ceramics – Medium (Glaze Larger Pieces or Bisc Thin)</b>			
Segment	Rate/hr	Temperature	Stage Time
1	150	250	1.20
2	400	1695	3.61
3	120	1945	2.08
<b>Total Firing Time:</b>		<b>6 hrs. 54 min.</b>	

<b>Ceramics – MedSlo (Bisc Medium Pieces)</b>			
Segment	Rate/hr	Temperature	Stage Time
1	120	250	1.50
2	300	1000	2.50
3	150	1100	0.67
4	225	1695	2.64
5	108	1945	2.31
<b>Total Firing Time:</b>		<b>9 hrs. 38 min.</b>	

<b>Ceramics – Fast (Glaze Thin Pieces)</b>			
Segment	Rate/hr	Temperature	Stage Time
1	570	1695	2.85
2	200	1945	1.25
<b>Total Firing Time:</b>		<b>4 hrs. 6 min.</b>	

Firing Profiles for Cone 6, Temperature 2232°F (1222°C)

<b>Ceramics – Slow (Bisc Hand Thrown)</b>			
Segment	Rate/hr	Temperature	Stage Time
1	80	250	2.25
2	200	1000	3.75
3	100	1100	1.00
4	180	1982	4.90
5	80	2232	3.13
<b>Total Firing Time:</b>		<b>15 hrs. 2 min.</b>	

<b>Ceramics – Medium (Glaze Larger Pieces or Bisc Thin)</b>			
Segment	Rate/hr	Temperature	Stage Time
1	150	250	1.20
2	400	1982	4.33
3	120	2232	2.08
<b>Total Firing Time:</b>		<b>7 hrs. 37 min.</b>	

<b>Ceramics – MedSlo (Bisc Medium Pieces)</b>			
Segment	Rate/hr	Temperature	Stage Time
1	120	250	1.50
2	300	1000	2.50
3	150	1100	0.67
4	225	1982	3.92
5	108	2232	2.31
<b>Total Firing Time:</b>		<b>10 hrs. 54 min.</b>	

<b>Ceramics – Fast (Glaze Thin Pieces)</b>			
Segment	Rate/hr	Temperature	Stage Time
1	570	1982	3.35
2	200	2232	1.25
<b>Total Firing Time:</b>		<b>4 hrs. 36 min.</b>	

## Appendix C: Custom Firing Default Programs

The custom firing programs will change based off the users customization settings. If Novice

mode is off, you can write over them to create your own programs. See Programming for Custom Firings

to make changes to a preloaded program. For all programs, the alarm is set to off (9999). When the

alarm temperature is changed, it only changes for the loaded program, not all programs.

User 1 – Blank 1			
Seg	Rate	Temperature	Hold
1	100	100	0:01

User 2 – Blank			
Seg	Rate	Temperature	Hold
2	200	200	0:02

User 3 – Blank			
Seg	Rate	Temperature	Hold
3	300	103	0:00

User 4 – CN6 Crystal			
GLZ	Rate	Temperature	Hold
1	500	1000	0:00
2	500	2230	0:15
3	9999	2000	0:00
4	500	1800	4:00

User 5 – CN10 Crystal			
GLZ	Rate	Temperature	Hold
1	300	1000	0:00
2	500	2320	0:10
3	9999	2000	3:00
4	500	1800	1:00

User 6 – Bead			
Annealing	Rate	Temperature	Hold
1	9999	960	8:00
2	9999	960	0:45

User 7 – Wine			
Seg	Rate	Temperature	Hold
1	500	500	0:15
2	500	1000	0:15
3	600	1250	0:20
4	500	1475	0:15
5	9999	1100	0:30
6	200	970	0:30
7	120	750	0:10

User 8 – PMC			
FAST	Rate	Temperature	Hold
1	9999	1650	0:10

User 9 – PMC3			
FAST	Rate	Temperature	Hold
1	9999	1290	0:10

User 10 – Lost Wax			
Silver	Rate	Temperature	Hold
1	500	300	2:00
2	500	700	1:00
3	500	1350	4:00
4	9999	900	8:00

User 11 – Lost Wax			
Gold	Rate	Temperature	Hold
1	500	300	2:00
2	500	700	1:00
3	500	1350	4:00
4	9999	800	8:00

User 12 – Full Power			
Test	Rate	Temperature	Hold
1	9999	1000	0:40

**Custom Programs: Heat Treat**

User 1 – 154CM			
ATS34	Rate	Temperature	Hold
Seg	9999	1900	0:30

User 7 – Draw			
500	Rate	Temperature	Hold
Seg	9999	500	2:00

User 2 – AISI 0-			
1	Rate	Temperature	Hold
Seg	9999	1450	0:20

User 8 – Draw			
400	Rate	Temperature	Hold
Seg	9999	400	2:00

User 3 – 440C			
S.S	Rate	Temperature	Hold
Seg	9999	1850	0:25

User 9 – Draw			
375	Rate	Temperature	Hold
Seg	9999	375	2:00

User 4 – AISI D-			
2	Rate	Temperature	Hold
Seg	9999	1850	0:20

User 10 – Draw			
300	Rate	Temperature	Hold
Seg	9999	300	2:00

User 5 – AISI A-			
2	Rate	Temperature	Hold
Seg	9999	1750	0:20

User 11 – Draw 275			
X2	Rate	Temperature	Hold
Seg	9999	275	2:00
2	9999	120	0:00
3	9999	275	2:00

User 6 – Draw 900			
X2	Rate	Temperature	Hold
Seg	9999	900	2:00
2	9999	125	0:00
3	9999	900	2:00

User 12 – Draw			
220/200	Rate	Temperature	Hold
Seg	9999	220	2:00
2	9999	120	0:00
3	9999	200	2:00

**Custom Programs: PMC**

User 1 – PMC			
Stand		Temperature	Hold
Seg	Rate 9999	1650	2:00

User 7 – Bronze			
Clay	Rate	Temperature	Hold
Seg	350	1550	2:30

User 2 – PMC			
+		Temperature	Hold
Seg	Rate 9999	1650	0:10

User 8 – Bronze Fast			
Fire	Rate	Temperature	Hold
Seg	1525	1525	1:00

User 3 – PMC			
3		Temperature	Hold
Seg	Rate 9999	1290	0:10

User 9 – Copper			
Clay	Rate	Temperature	Hold
Seg	9999	1750	3:00

User 4 – PMC			
Gold		Temperature	Hold
Seg	Rate 9999	1650	0:10

User 10 – White			
Copper	Rate	Temperature	Hold
Seg	9999	1850	2:00

User 5 – ArtClay			
Silver		Temperature	Hold
Seg	Rate 9999	1436	0:05

User 11 – Burnout			
Stage	Rate	Temperature	Hold
Seg	600	650	0:30

User 6 – ArtClay			
Gold		Temperature	Hold
Seg	Rate 9999	1814	1:00

User 12 – Dry			
Seg	Rate	Temperature	Hold
1	9999	120	1:00

## Appendix D: Blank Firing Program

Keep this page as a Master and photocopy as needed.

Firing Program Number: \_\_\_\_\_

Segment	Rate Per Hour	Temperature	Hold
1			
2			
3			
4			
5			
6			
7			
8			

Firing Program Number: \_\_\_\_\_

Segment	Rate Per Hour	Temperature	Hold
1			
2			
3			
4			
5			
6			
7			
8			

## **Appendix E: Common Questions and Situations**

### **Q. How do I clear an error message?**

**A.** To stop the sounding alarm, press anywhere on the screen. Then to clear the message, press “Clear” and the controller will return to the IDLE screen.

### **Q. What is a segment?**

**A.** A segment is the basic building block of a program. Each segment consists of a ramp rate in degrees per hour, a temperature you want to achieve, and whether you want to hold there or not. For example, a program for drying ware going at 60°F/hour to 200°F and holding for 2 hours would be a one segment firing, the ramp is 60, the temperature is 200, and the hold is 2.00.

### **Q. Do I need to use witness cones for each firing?**

**A.** After checking your kiln with witness cones for the first few firings, if you are satisfied with the results you are getting and how even the kiln is from top to bottom, then you do not need to use cones in each firing. It is a good practice to periodically place witness cones in the kiln to check for proper firing. If you suspect a problem or your results have changed, then it is a good idea to check the operation of the kiln with witness cones.

### **Q. Who do I contact for parts for my kiln?**

**A.** For replacement parts for your kiln (relays, elements, etc.), contact the kiln manufacturer. For any issues with your controller contact us at Bartlett Instrument Co. for a solution.

## Appendix F: Zone Control

Your kiln must have multiple thermocouples and be wired for multiple zones to take advantage of these features:

### 1. Features and Enhancements

- 3 separately controlled zones (3 T/C inputs, 3 outputs)
- Adjustable offsets for each thermocouple (T/C)
- Continues to fire with 1 or 2 failed thermocouples (T/C's)
- Slows ramping when any zone lags the set-point
- Reset function which zeros the TC offsets and turns the errors on

### 2. General Description

The Genesis advanced 3-zone control system is programmed the same as the single zone control

but it ensures an even firing from the top to the bottom of the kiln. A 3-zone control has 3 temperature

sensor inputs (thermocouples) and 3 independent outputs so the kiln can have 3 separately controlled

sections (zones). The controller senses the temperature in each section of the kiln, compares the temperature to the desired temperature (traveling set-point) and adjusts the power going to each section separately giving each just the right amount of power to keep the temperature at the correct

setting. The single zone controller only measures the temperature at the center of the kiln and gives all

sections the same amount of power.

### 3. Automatic Lag Function

Lag refers to when the temperature of a kiln's section "lags" behind the traveling set point because the programmed ramp rate is faster than the kiln's temperature can rise. The Genesis will slow

the ramp rate when a section of the kiln lags. The ramp rate determines the amount of "lagging" that is

allowed before the firing rate is slowed. Fast ramp rates (>500 °F/hr) will allow the greatest temperature

difference between sections. Slow ramp rates (<70 °F/hr) will have the smallest temperature differences

between sections. Therefore, when the controller is programmed to go fast it will sacrifice evenness to

obtain speed. Likewise, when the controller is programmed to go slow, the controller will maintain tighter control. The controller will try to balance speed and tight control when a medium speed is programmed.

### 4. Thermocouple Offsets

(See T/C offsets and Cone offsets on page 18 for more information)

Normal variation in thermocouples can cause a section to fire too hot or too cold. The zone

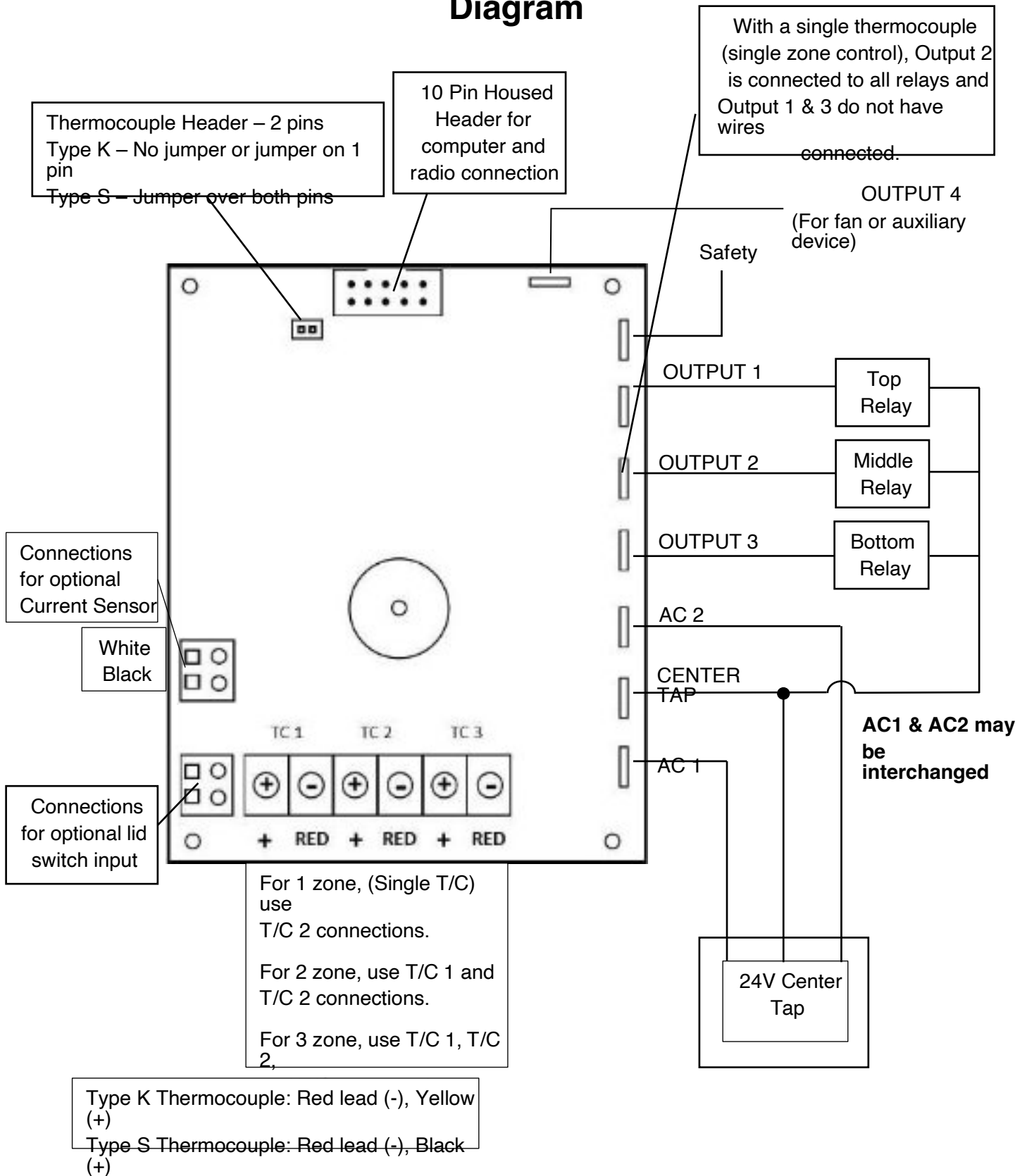
control has an offset feature to adjust the reading of each thermocouple to compensate for any error.

## **5. Three Thermocouples**

Besides better measuring of the temperature, the zone control also offers security through its three thermocouples. With a single zone controller, a firing will be stopped if the thermocouple fails. The zone control with 3 T/C's will continue to fire if one or two of its thermocouples fail during a firing. If the top or bottom thermocouple fails, that section will be controlled by the top T/C. If the controller is at IDLE and a T/C fails, "Error Thermocouple Failed" will appear on the screen.

When using three thermocouples, thermocouple 2's temperature is displayed under current temperature. The temperature of each zone can be viewed during the firing. To view the other thermocouple temperatures, press the screen where the current temperature is displayed. The temperatures for all three T/Cs, percentage of power to the elements, and the current Set Point will appear.

## Appendix G: Genesis Connection Diagram



## Appendix H: Genesis Mini Connection Diagram

